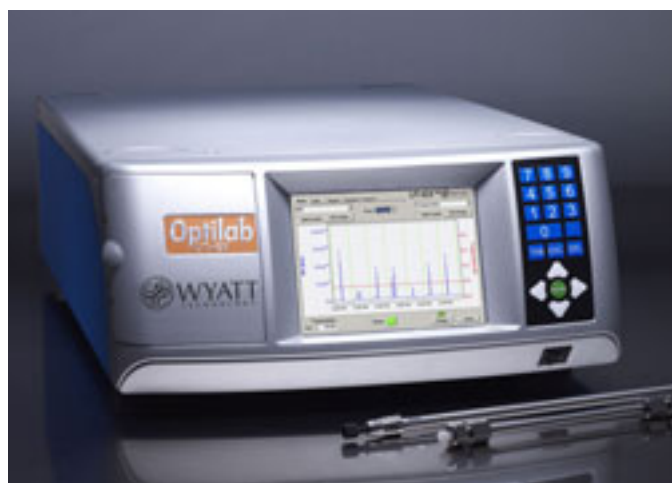


Refractive Index Detector for UHPLC



Wyatt Technology Corp. has introduced a new refractive index (RI) detector, the Optilab UT-rEX, specifically designed for use with UHPLC systems using columns packed with small beads.

The Optilab UT-rEX uses a combination of miniaturized components and semiconductor photodiode technology as well as computer algorithms. The instrument's linearity over a wide range, coupled with its sensitivity to samples that are not ultraviolet active, make the product an exciting addition to UHPLC.

Due to the small volumes of UHPLC, the dead volume for the instrument is $<1.5\mu\text{l}$. As a result, the UT-rEX also offers high resolution, which will not be compromised. The instrument has no range or gain setting and the full range of instrument detection is present and the full sensitivity exists over the entire range. The small flow cell and temperature regulation enable stable RI baselines and RIS signals. The instrument can be operated below ambient temperatures as easily as above ambient. No-hassle temperature control can be programmed down to 4 C or as high as 50 C.

Wyatt Technology Corp., www.wyatt.com [1]

Source URL (retrieved on 01/31/2015 - 12:48am):

<http://www.rdmag.com/product-releases/2013/02/refractive-index-detector-uhplc>

Links:

[1] <http://www.wyatt.com/>